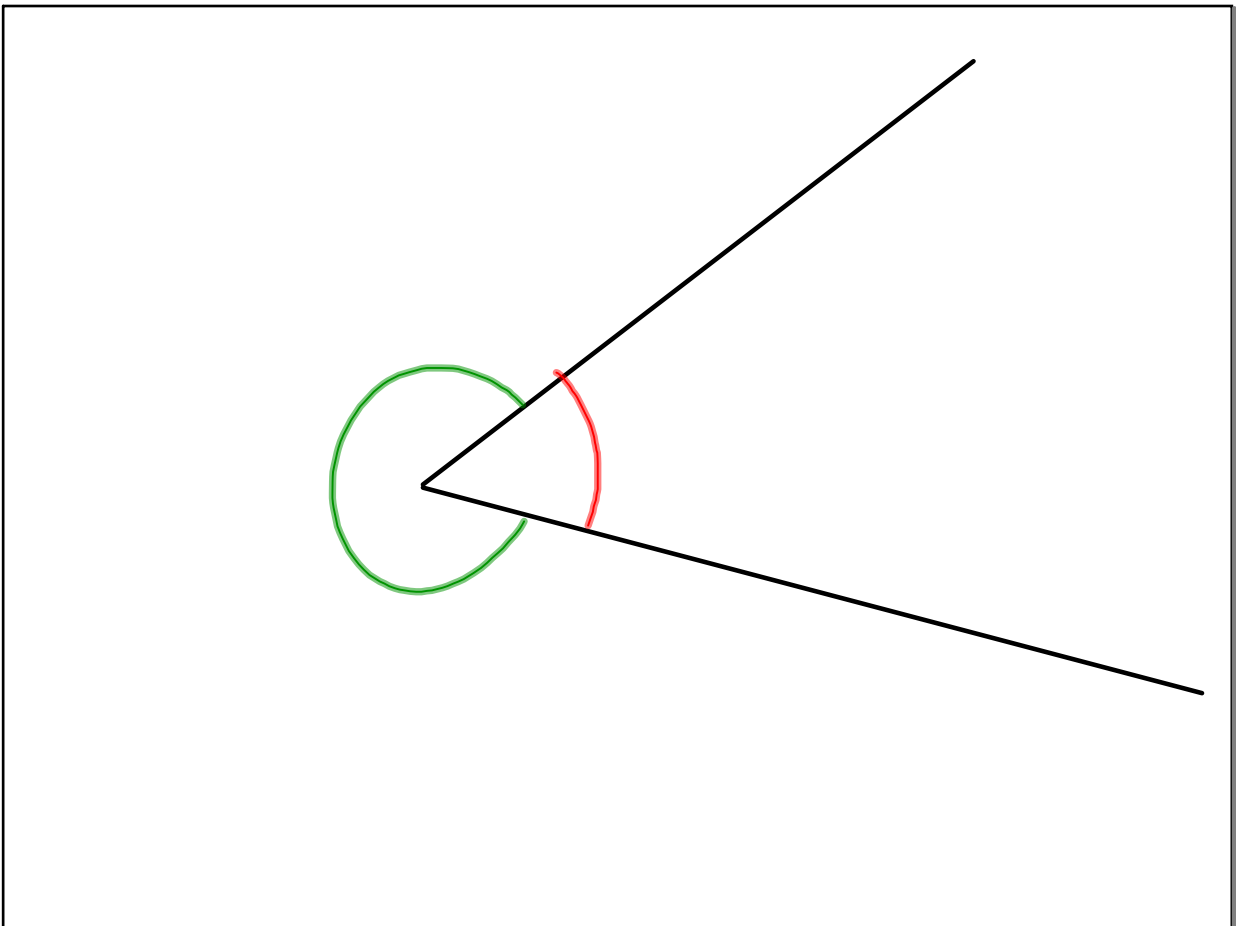


febr. 2-23:30



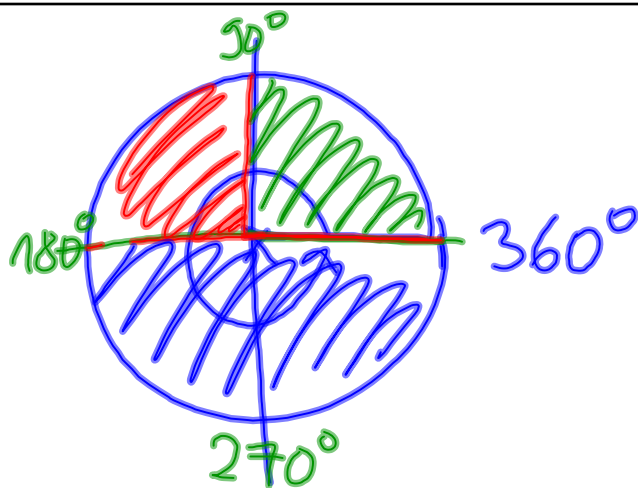
febr. 3-9:16

A szög

A sík egy pontjából
kiinduló 2 félegyenes a
síkot 2 szögtartományra osztja.



febr. 3-9:19

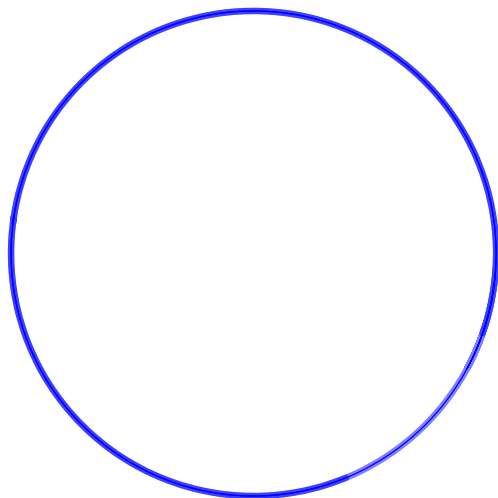


febr. 3-9:23

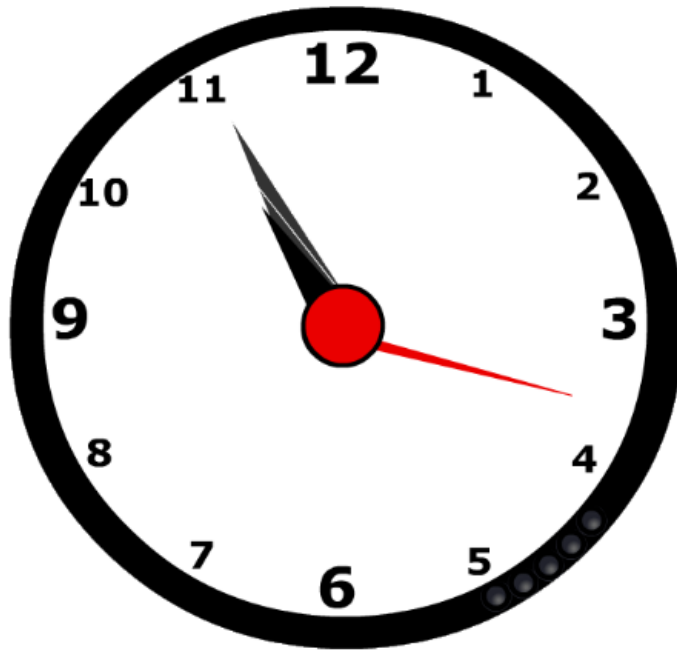
A szögek csoportosítása:

- nullszög (0°)
- hegyesszög ($0^\circ < \alpha < 90^\circ$)
- derékszög (90°)
- tompaszög ($90^\circ < \alpha < 180^\circ$)
- egyenesszög (180°) $\rightarrow \hat{=}$
- homorúszög ($180^\circ < \alpha < 360^\circ$)
- teljesszög (360°)

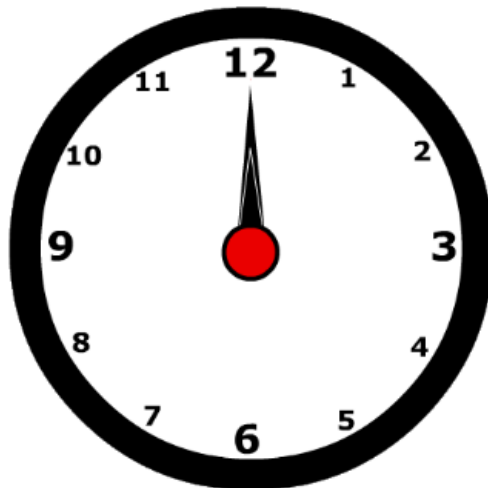
febr. 3-9:26



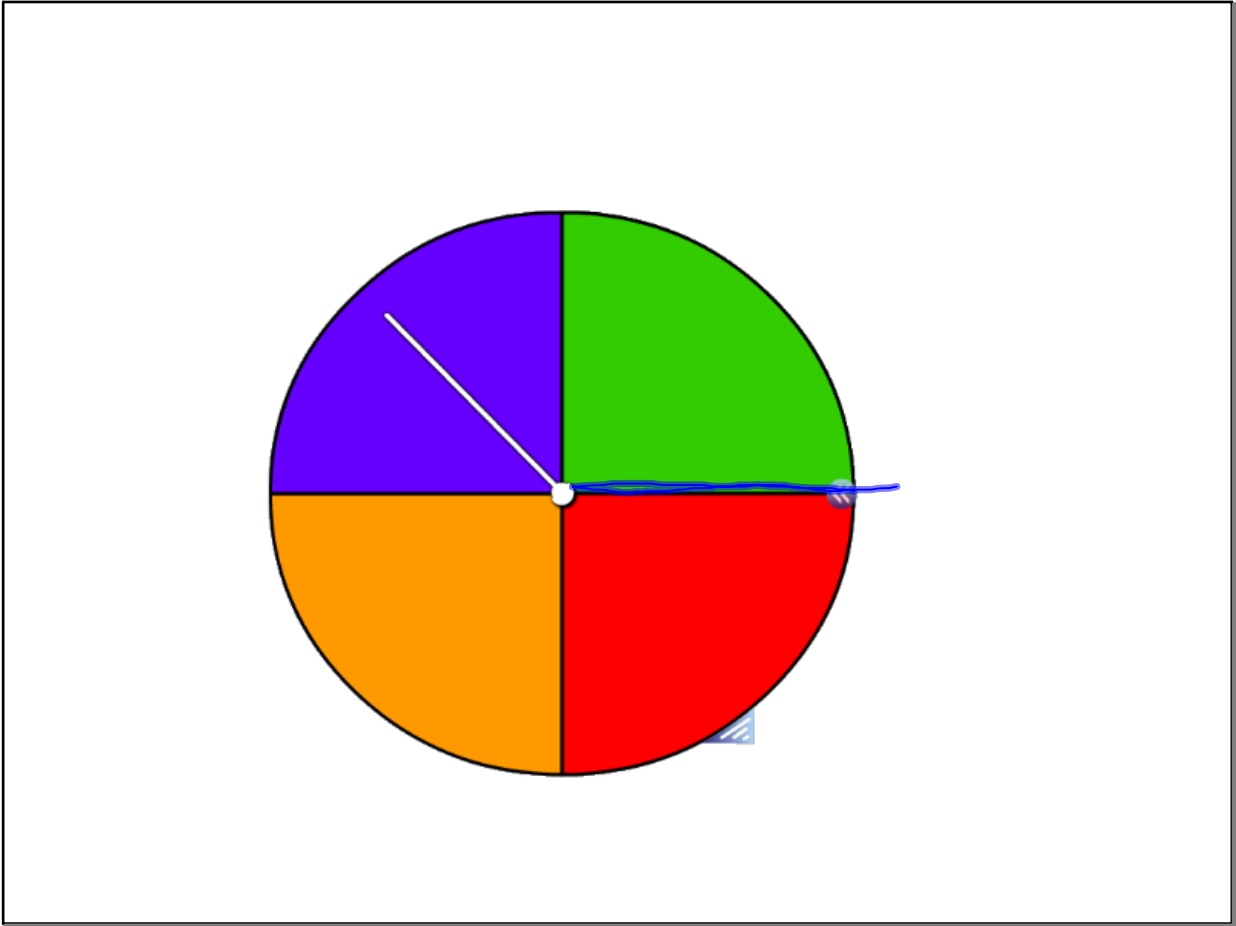
febr. 2-23:31



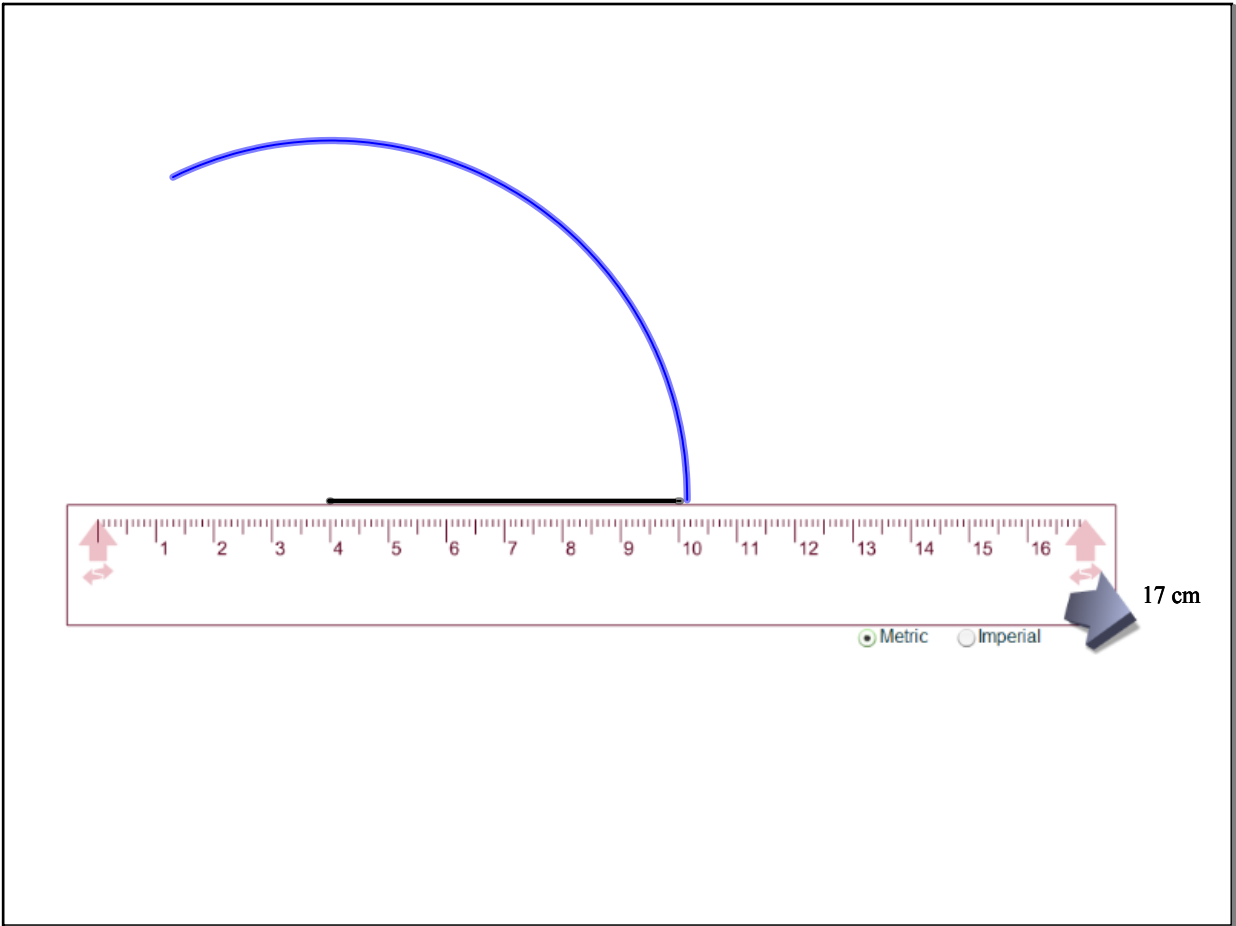
febr. 2-23:38



febr. 2-23:42



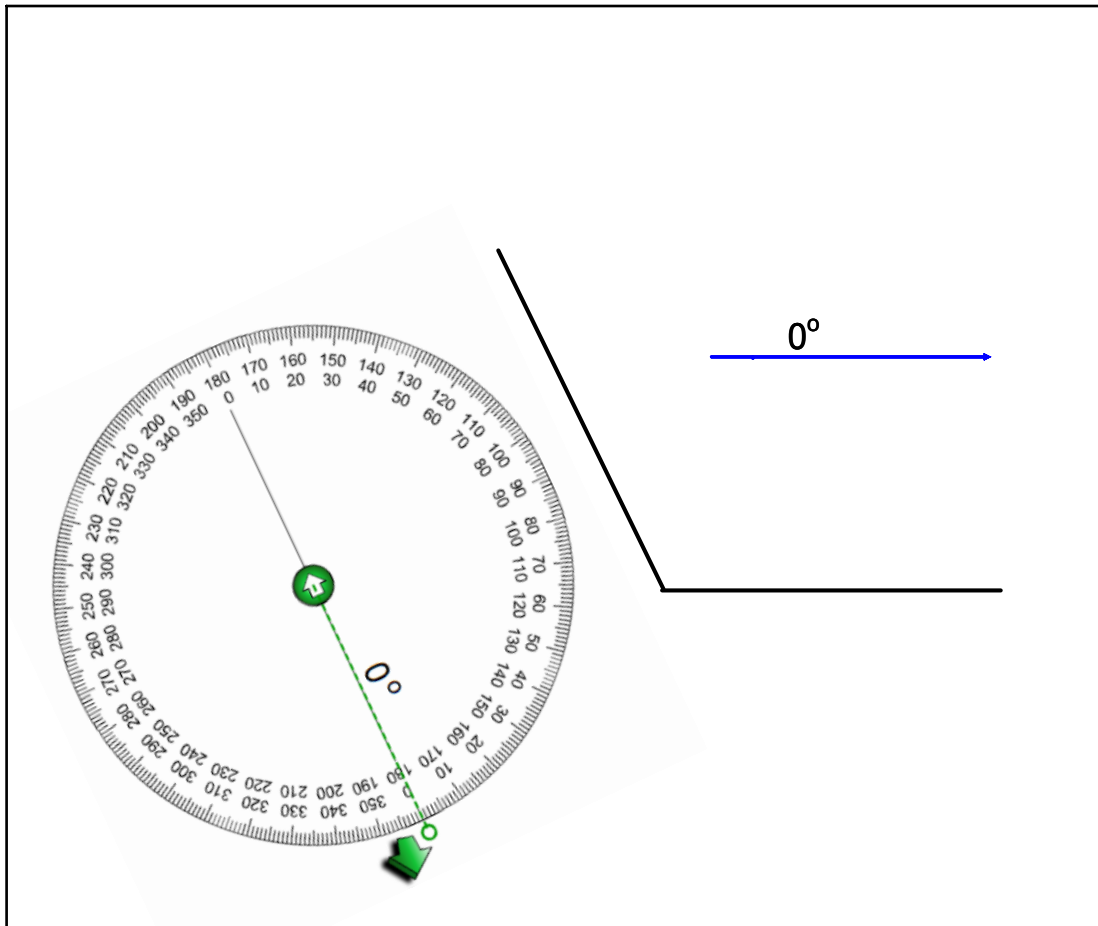
febr. 2-23:35



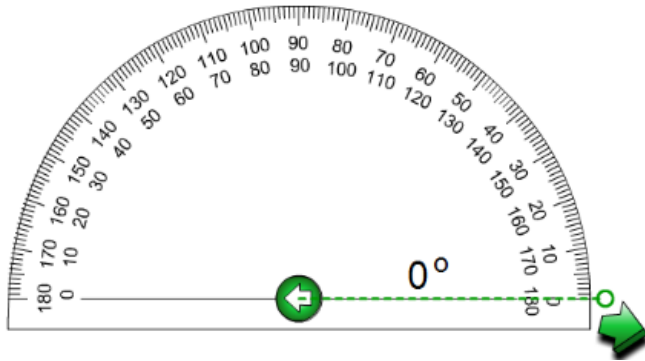
febr. 2-23:45



febr. 2-23:48



febr. 2-23:49



febr. 2-23:51

Q.1

Melyik a tompaszög?

A 25 fok

B 90 fok

C 136 fok

D 180 fok

febr. 2-23:52

Edit ?

92	136	99
24	11	72
13	178	37
5	154	89



hegyesszög




tompaszög

Reset

febr. 3-0:08

Edit ?

Hits 0 0 Misses



a	b	c	d	e	f	g
h	i	j	k	l	m	n
o	p	q	r	s	t	u
	v	w	x	y	z	
				ö		

Sound
 Reset
Buy a letter
Clue

febr. 3-0:13



hegyesszög

febr. 3-0:17



febr. 3-0:20