

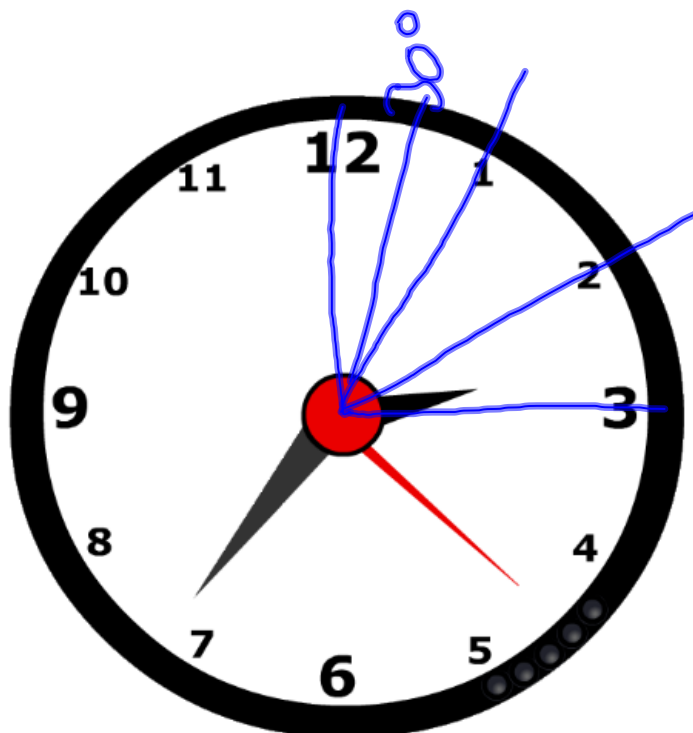
02.05.

1. Mekkora szöveget zár be egymással
a kis és nagy mutató

a) 12:30 kor ?

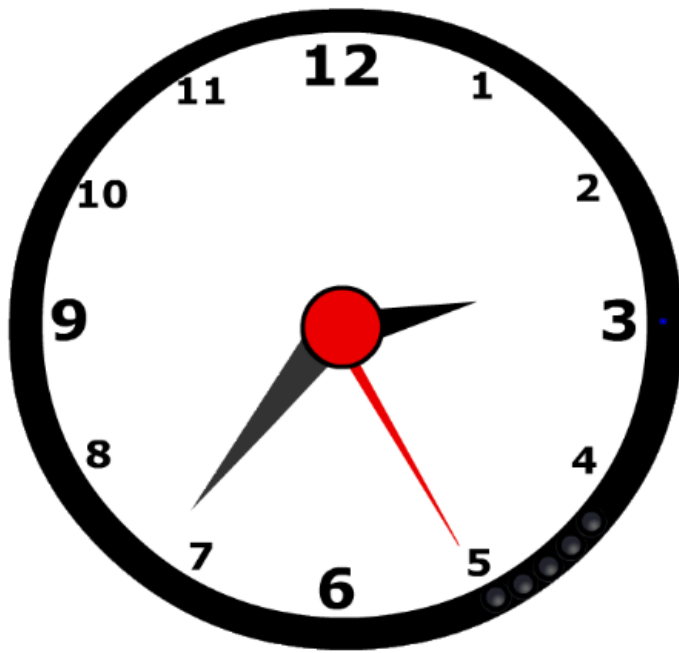
b) 16:10-kor ?

febr. 5-9:12

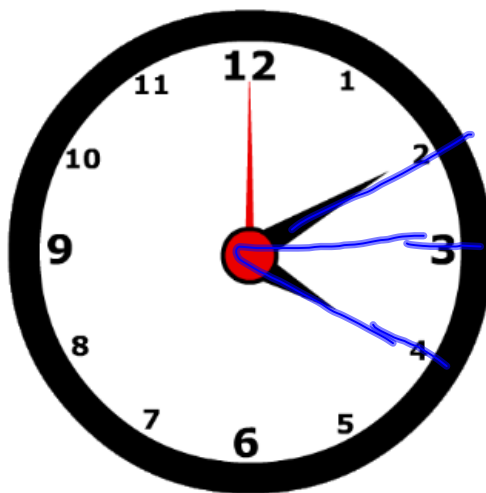


165°

febr. 5-9:23



febr. 5-9:23



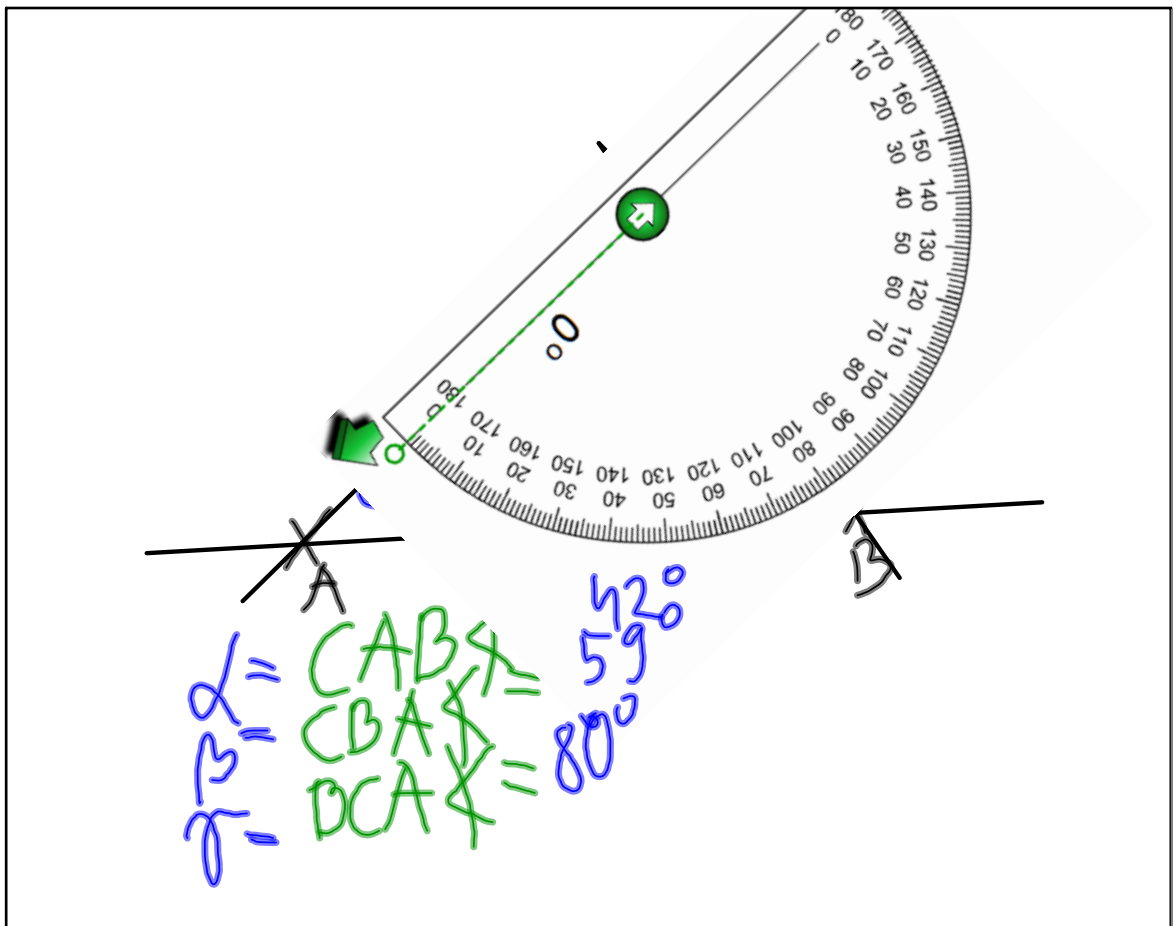
65°!



febr. 5-9:25

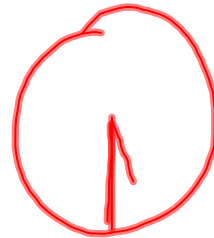
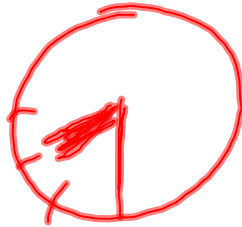
Déli 12⁰⁰ óra után
 mikor találkoznak újra
 a mutatók (kézi és a napj)?

febr. 5-9:27

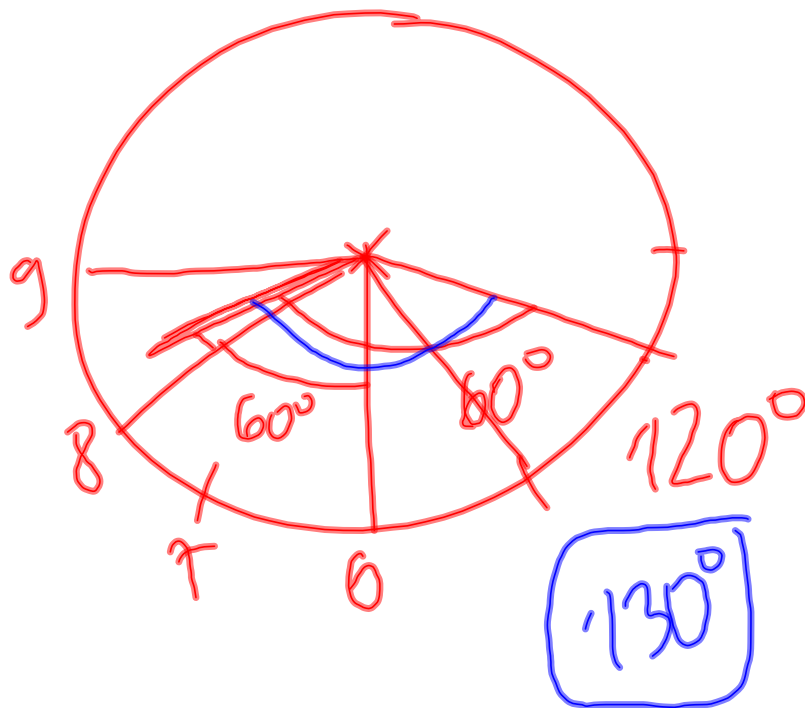


febr. 5-9:31

Hf: a, 12:00 0° e, 19:30 45°
 b, 15:00 90° f, 21:00 90°
 c, 17:30 15° g, 107:30 45°
 d, 18:00 180° h, 08:20



febr. 5-9:48



febr. 6-8:47